

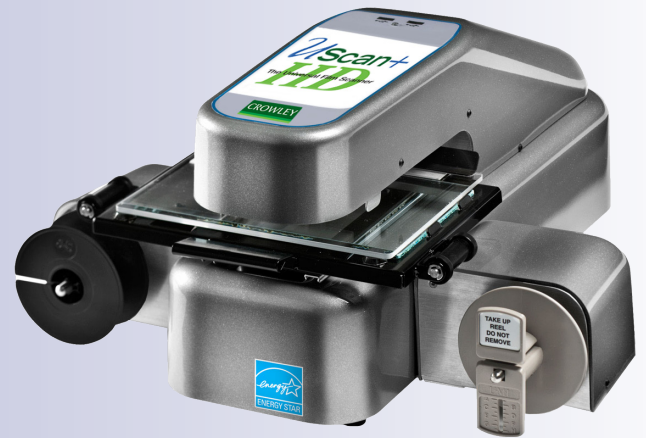
# UScan+

UF-SERIES

SMART.  
UNCOMPLICATED.  
AFFORDABLE.

Building on the unprecedented success of the original UScan Universal Film scanner and incorporating more than 40 years of production-level manufacturing, Crowley now offers a full UScan+ UF-Series. Engineered to continuously advance with the latest technology, the UScan+ UF-Series offers today's most affordable scanners for public access and low-volume back-office use. Driven by ease-of-use and maximum image clarity, the UScan+ UF-Series simply and efficiently digitizes all microfilm and photographic material formats on a single unit.

Clients worldwide have replacing archaic and outdated microfilm reader-printers with the digitally capable UScan+ UF-Series.



## KEY FEATURES

### Designed for Public Use

Walk-up scanner with **sturdy construction**, **customizable interface**, **Kensington lock security**, **whisper-quiet operation**, optional **pay-per-use interface** and **low maintenance** requirements. Ideally suited to library, office and museum applications.

### On-demand Multi-format Scanning

Digitizes roll microfilm, microfiche/microcards, aperture cards, and photographic slides/negatives with **icon-driven touchscreen interface**

**Scan, Print or Save** in color, grayscale or bitonal

### High Resolution USB3 Image Sensor in 18MP or 10MP

Higher image sensors provide full-motion response, eliminating on-screen distortions

### Learn-As-You-Go Auto Focus

Increase efficiency as the UScan+ learns favorite focus and zoom positions to **speed up image access, review and output**

### User-defined Quick Start

Customize start-up settings specific to the type of in-house media or end-user for improved efficiency

### One-click Instant Capture

Automatically detect and save frames on the film

### Flexible Output Options

Save files to hard drive or personal USB/flash drive; print to **hard copy**; output to **cloud, email** and more

### InterLibrary Loan (ILL) Compatible

Fully-compatible with ILL document delivery service

### Searchable Text (OCR) and Foot-pedal

Optional features add value to efficient research methods

### RapidScan Option

Fully-automatic motorized film advance and frame detection for **batch scanning** (see reverse side for models)

## UScan+ Universal Film Scanning Systems

The easier, simpler, better way to scan multiple media with a single unit

"The UScan+ is revolutionizing how we can provide access to the wealth of content contained in our scrapbooks. We are pleased to highlight its capabilities to research librarians, showcasing how we are using technology to increase access to content."

~ Bridget Carr, Senior Archivist, Boston Symphony Orchestra



CROWLEY

# A 4:1 ECONOMY OF SCALE

One **UScan+ UF-Series** scanner takes the place of four separate scanners – microfilm, microfiche, aperture card and photograph. All **UScan+** models incorporate the production-level technology that has raised Crowley’s scanner brands to premier status in the digitization, records management and preservation industries. With an intuitive design and multi-use functions, the **UScan+** scanners are the ideal unit for libraries, museums, universities, corporate archives and government offices – anywhere microfilm is available for public access or back-office research.

## USER EASE

- Single cable connectivity
- Simple touchscreen commands
- Excellent image quality
- Fast scrolling
- Dual save outputs to grayscale and bitonal images in one click
- Adjustable roller guides to secure and protect film
- Instant motor stop/start for precision and control
- Magnetic 16/35mm film platen positioning for Rapidscan allows for best image viewing/scanning (see below for models)
- Easily fitted with pay-per-use and follow-me capabilities

## TECHNICAL SPECIFICATIONS

	UScan+ (10MP*)	UScan+ HD LTE (18MP*)	UScan+ HD (18MP*)
<b>Image Sensor*</b>	<b>10MP</b> high-resolution <b>active</b> pixel area array sensor with real-time on-screen view	<b>18MP</b> ultra-high resolution <b>active</b> pixel area array sensor with real-time on-screen view	
<b>Compatible Film Types</b>	Microfiche; jackets; jumbo fiche; ultrafiche; AB Dick; microcards; 16/35mm roll microfilm; cartridge (M-type, C-clip); aperture cards; photographic slides; negatives; 35mm perforated films		
<b>Lens Optics</b>	Production-level, high-end customized lens developed specifically for microform clarity		
<b>Capture Time</b>	1/3 second per image		
<b>Maximum Scan Area</b>	35 x 47/ 1.38 x 1.85 inches (on film)		
<b>Output Resolution</b>	100-2400 dpi		
<b>Output Options</b>	Scan to file, network, USB, print, email, Cloud, Dropbox, Google Docs		
<b>Focus Adjustment</b>	Automatic and manual		
<b>Sensor Optimization</b>	Included; fully adjustable optical image rotation		
<b>Zoom Adjustments</b>	Motorized (optical) and digital		
<b>File Formats</b>	TIFF (raw, compressed, single or multi); PDF (single, multi-page); JPEG; JPEG 2000; BMP; GIF; PNG		
<b>Integrated USB Output</b>	Two built in USB ports (with backwards compatibility)		
<b>Light Source</b>	Custom-calibrated, color-compatible LED array		
<b>Security</b>	Integrated Kensington lock slot		
<b>Interface</b>	USB 3.0		
<b>Operating System</b>	Windows 7 Pro (64 bit only); Windows 8 (64 bit only) Intel Processor; Windows 10 (64 bit only) Intel Processor		
<b>Dimensions</b>	Base Unit Only: 12 x 20.3 x 9in (304.8 x 515.62 x 228.6mm)/ With Film Carrier: 17 x 20.3 x 9in (431.8 x 515.62 x 228.6mm)		
<b>Weight</b>	16 lbs / 7.2 kg		
<b>Reduction Ratio</b>	7x to 105x	7x to 60x	7x to 105x
<b>Capture Mode</b>	Color, grayscale or bitonal	Grayscale or bitonal	Color, grayscale or bitonal
<b>Standard Features</b>	Touchscreen; manual and motorized roll film pods; smart edit; opaque microcard LED, 3M adapter; RapidScan Batch Scanning; annotation	Touchscreen; manual and motorized roll film pods; smart edit; annotation; timed auto-capture for film and fiche	Touchscreen; manual and motorized roll film pods; smart edit; opaque microcard LED, 3M adapter; RapidScan Batch Scanning; timed auto-capture for film and fiche; annotation
<b>Scanner Options</b>	Vendor interface kit; OCR; foot pedal	Vendor interface kit; OCR; foot pedal; RapidScan batch scanning; 3M adapter; opaque microcard LED	Vendor interface kit; OCR; foot pedal

240.215.0224 (U.S.) | [www.thecrowleycompany.com](http://www.thecrowleycompany.com)



The Crowley Company pursues a policy of continuous product improvement and reserves the right to change these specifications without notice.



Reseller Contact

Rev 01/18