

The following is a technical bulletin with updated information on the specifications and/or operation of the Wicks and Wilson 8800-Series microfilm scanners. If you have questions regarding the information within, please email your Crowley representative or [eusupport@thecrowleycompany.com](mailto:eusupport@thecrowleycompany.com) (UK and Europe) or [support@thecrowleycompany.com](mailto:support@thecrowleycompany.com) (all other locations).

#### FIRMWARE COMPATIBILITY

<b>Product:</b>	<b>8800-Series</b>
<b>Current Serial Number Set:</b>	<b>8009xxx</b>
<b>Software Version:</b>	<b>4.0.1</b>
<b>Firmware Version:</b>	<b>80B/03.00</b>
<b>FPGA:</b>	<b>N/A</b>
<b>PC (Recommended):</b>	i7 Processor, 16GB, SSD or SATA Drive, Windows 7, 8.1 and 10 all 64 Bit only, USB port for dongle.
<b>PC Configuration (Required):</b>	A NVIDIA Graphics Card (280 GTX or better)

**Date:** 11/19/19

**Subject:** 8800-Series SCANFILM Software, Release 4.0.1

**Part Number:** 8000224

Wicks and Wilson, a division of The Crowley Company, has issued a new production version of the 8800-Series SCANFILM software 8000224 at Release 4.0.1. This technical bulletin describes the new features in the 8800-Series SCANFILM software since the last production release 3.3.0. This software will operate both the 8820 and 8850 Scanstations on Windows 7 (32-and 64-bit), Windows 8.1 (64-bit) and Windows 10 (64-bit) – all with the Professional versions only.

If you wish to upgrade from 32 Bit Software to 64 Bit Software, please order the 8800-Series SCANFILM Software for Windows 7, 8.1 or 10 64-bit with part number, **8000224**. This part number will contain a software installation DVD and a software dongle to enable the software to operate on Windows 7, 8.1 or 10 64-bit.

If carrying out an upgrade only to a previous version of 8800-Series software that may already reside on your controller PC, please first UNINSTALL the Teledyne DALSA Sapera LT program that will show with your Control Panel's program list before upgrading the 8800-Series Software. The 8800-Series software install will not highlight this matter and will upgrade the 8800-Series software regardless of if the latest Teledyne DALSA Sapera LT program is not installed.

\\Drivers 64\Dalsa\SaperaLT is the folder on the SETUP disk where the latest Teledyne DALSA Sapera LT drivers reside. Please refer to Appendix A.

#### A NEW FEATURES IN THIS RELEASE

- A.1 Further enhancements with the 8800-Series software together with VSS Software when generating [IMAGEhost](#) archives
- A.2 Rotation of 600 dpi files now allowed depending on memory of graphics card
- A.3 Able to save bitonal multi-page TIFF and bitonal multi-page PDF files

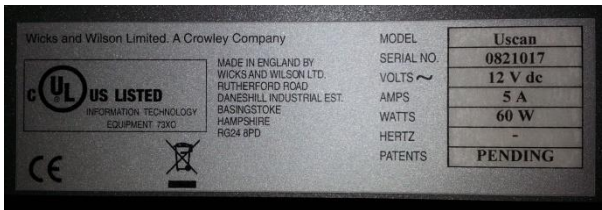
## B COMPATIBILITY WITH HARDWARE AND FIRMWARE

- B.1 This version of the software requires a PC controller fitted with a Card 500 Frame Grabber, part number 9090036
- B.2 Firmware Version 80B/03.00 or later is required for this issue of the software
- B.3 A NVIDIA Graphics Card (280 GTX or better) together with its driver should be used in the PC controller
- B.4 A specific 8800-Series dongle will be required to operate its 8820 or 8850 software.

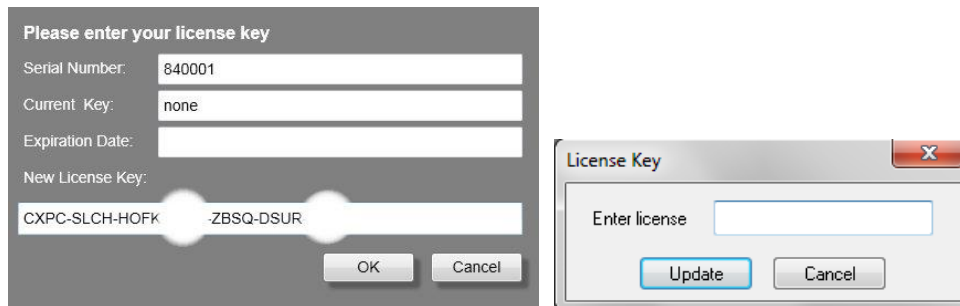
## C COMPATIBILITY WITH DOCUMENTATION

This release is supported by Issue 4.0.0 of the 8800 Series Rollfilm Scanstation User Guide, part number 8000231.

You will be required to key in your scanner's serial number, when your scanners software is first initialized.



The label showing the serial number of your scanner can be found on its underside or close to the power inlet of the scanner. If required, enter the serial number of your scanner into the screen dialogue. You may not be required to do this with some versions of software.



You will now need to enter in your **Serial License Key**, shown above in this document, unique to your scanner, shown by these different menus depending on the scanner you are using.

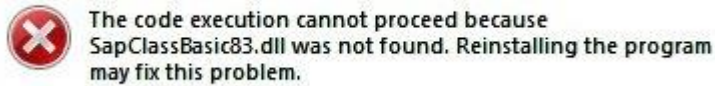
Once this new license key is entered, press OK and a message will appear to show if the license has been successfully validated.

**If you press cancel to the above menu, then you have THIRTY (30) days to enter your license key.** If you have not obtained a license key within thirty days from The Crowley Company, then the trial period will have expired and your software will no longer operate once the scanner is initialized.

There is no need for an internet connection to be in place during this activation process.

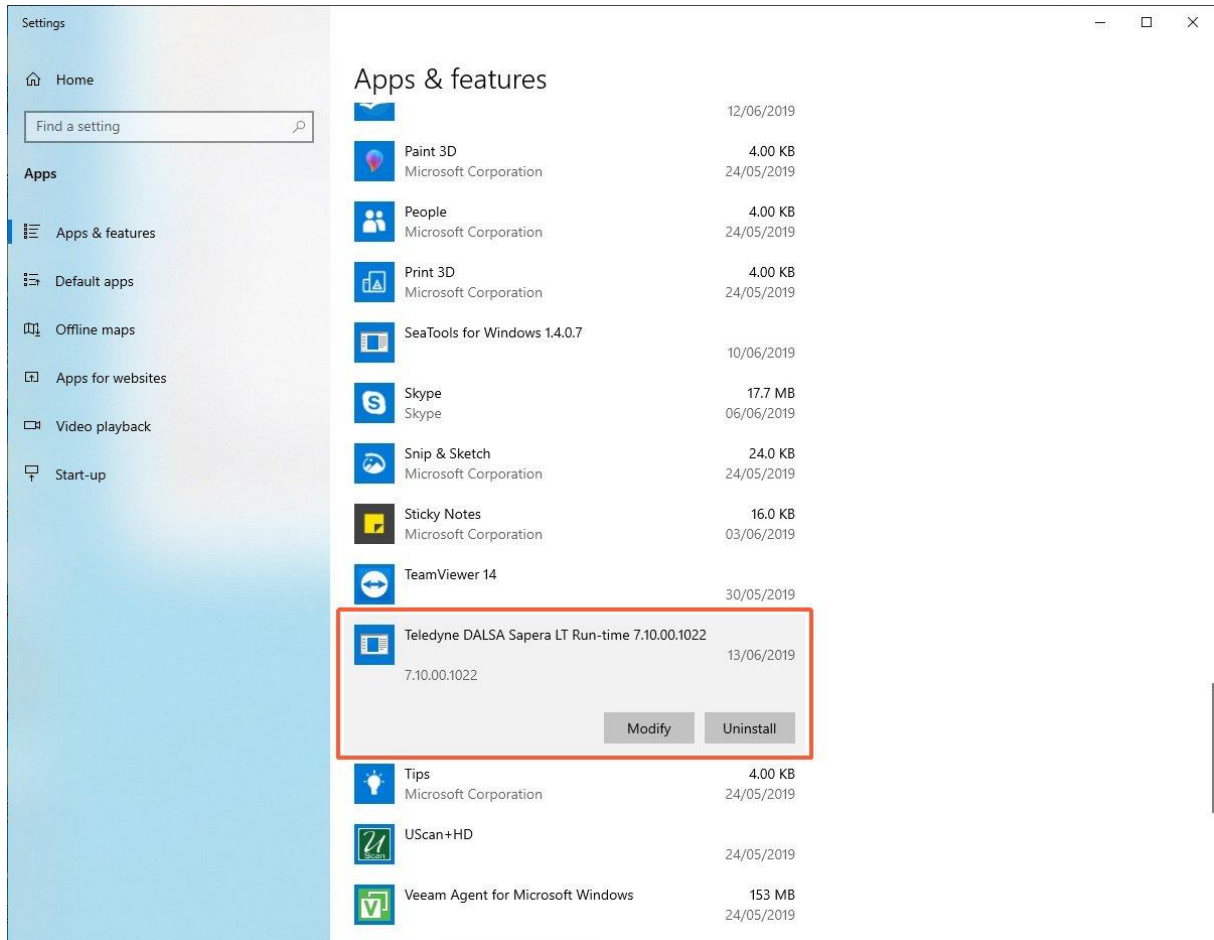
## APPENDIX A

If the upgrade of the 8800-Series has been carried out and the earlier **red text** has been ignored, then when attempting to run the 8800-Series 4.0.1 software release, the following message may be shown.

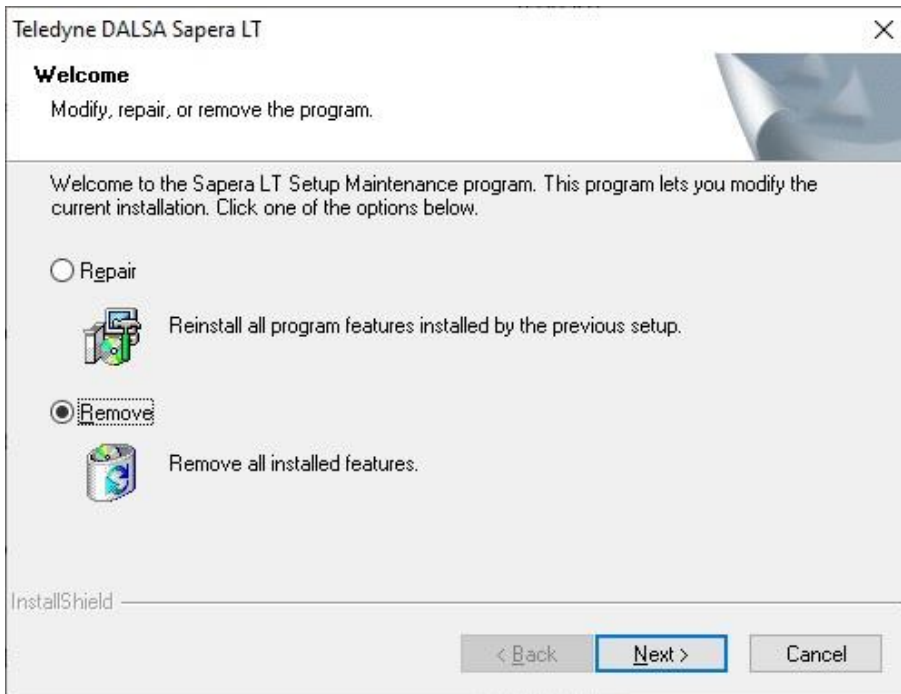


The above message refers to the DALSA Frame Grabber Card, situated within the 8800-Series Controller PC. This has its own drivers, separate to the 8800-Series installation.

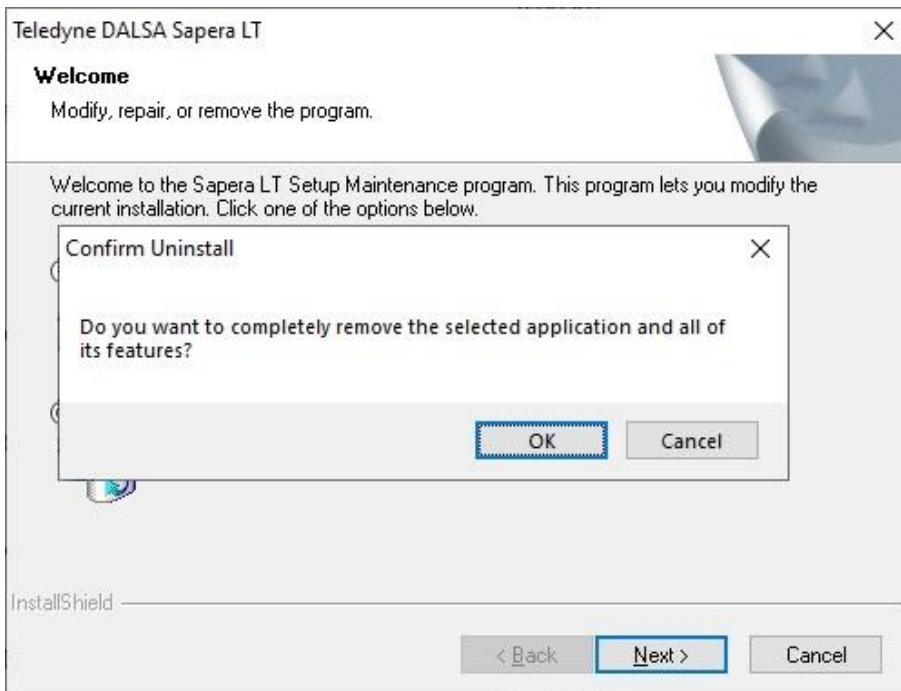
The following directions highlight how to uninstall the Sopera LT driver associated with the DALSA Frame Grabber Card and how to install its latest driver.



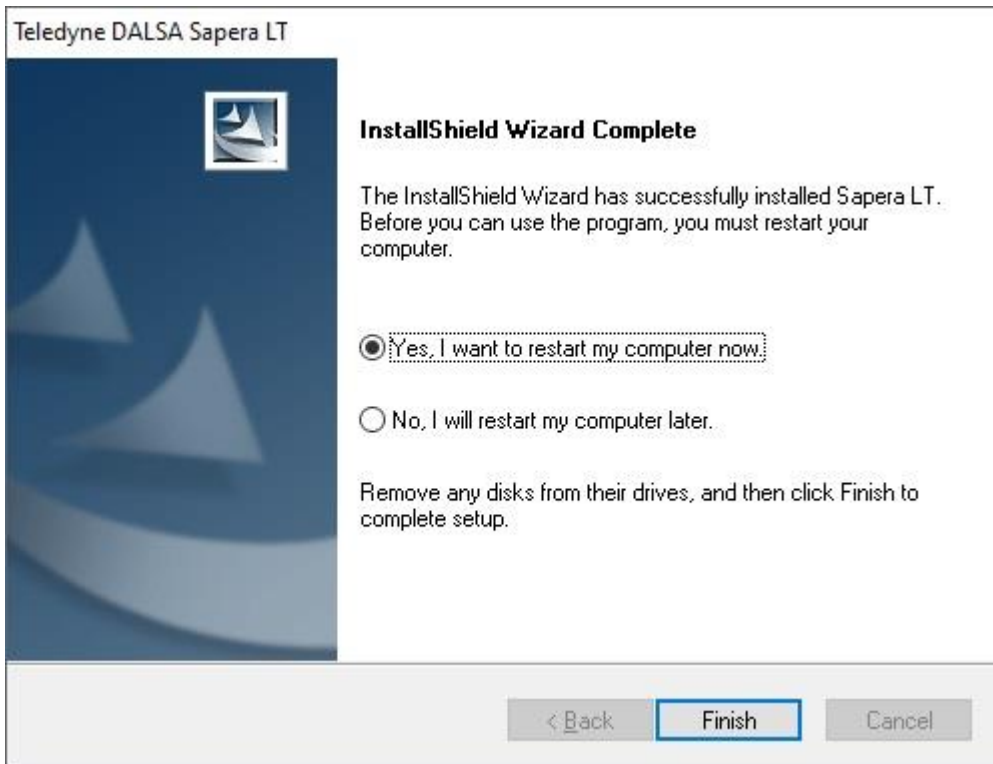
Click on **Uninstall** for the Teledyne DALSA Sopera LT Run-time driver in the Apps and Features section.



Click on **Remove** and **Next**.



Confirm the uninstall and click **OK** to continue.



Click **Finish**, allowing the PC to restart.

Once uninstalled, the latest Teledyne DALSA Sapera LT driver can be found within....

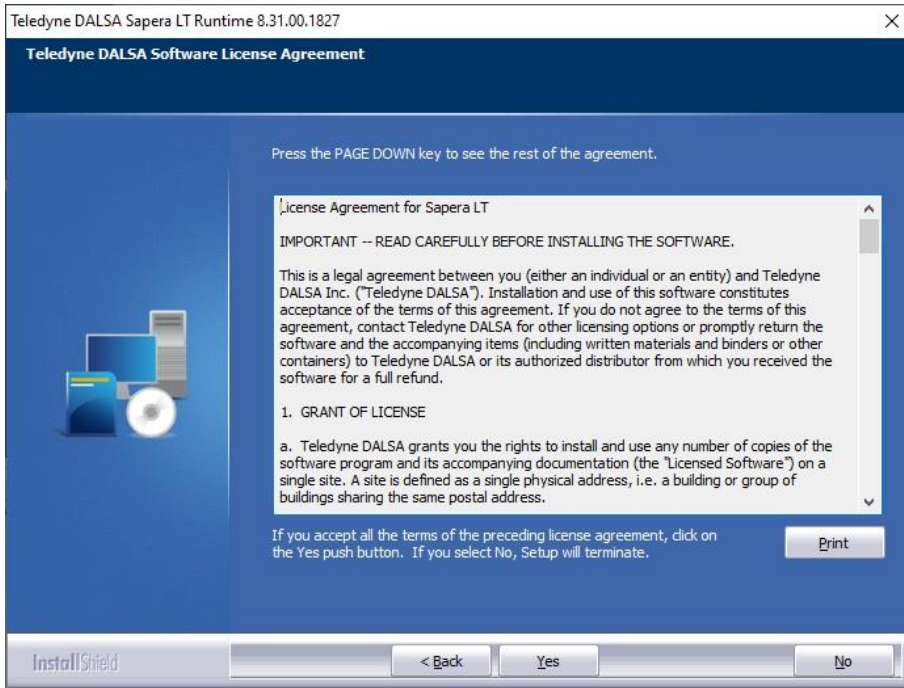
\\Drivers\SaperaLT on the 88 Series installation disk.

File Name	Date/Time	Type	Size
sapera_lt_831_runtimesetup	12/03/2018 17:02	Application	155,233 KB
setup.iss	03/11/2011 12:03	ISS File	1 KB

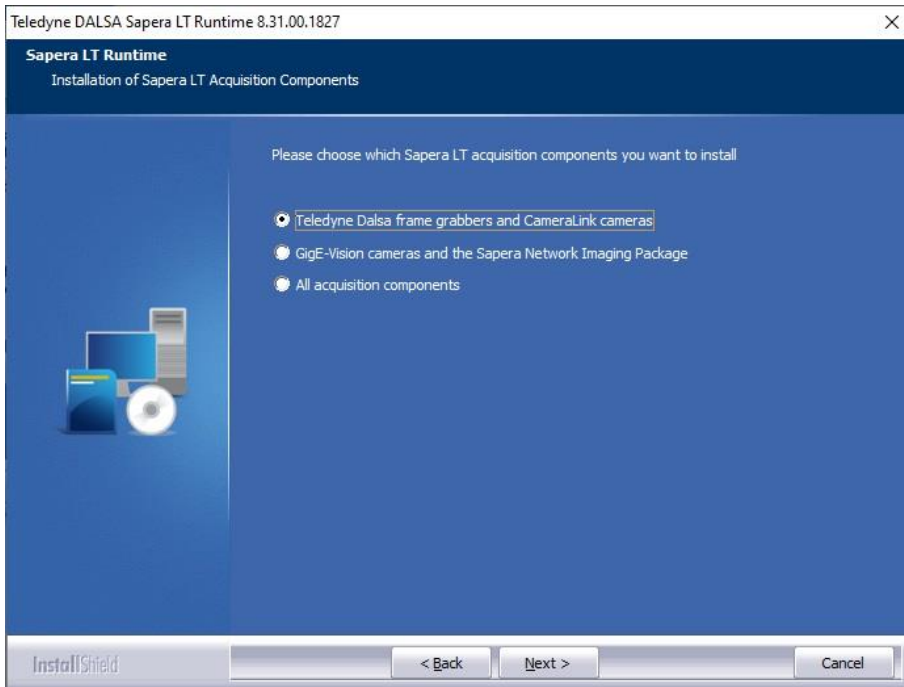
Double click on the **sapera\_lt\_831\_runtimesetup**.



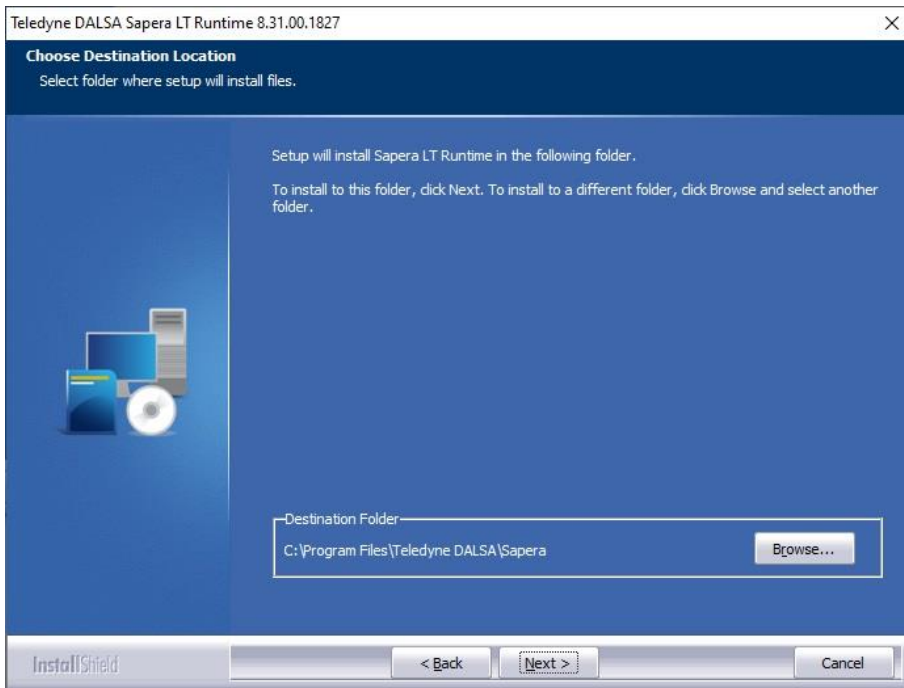
Click **Next** to continue.



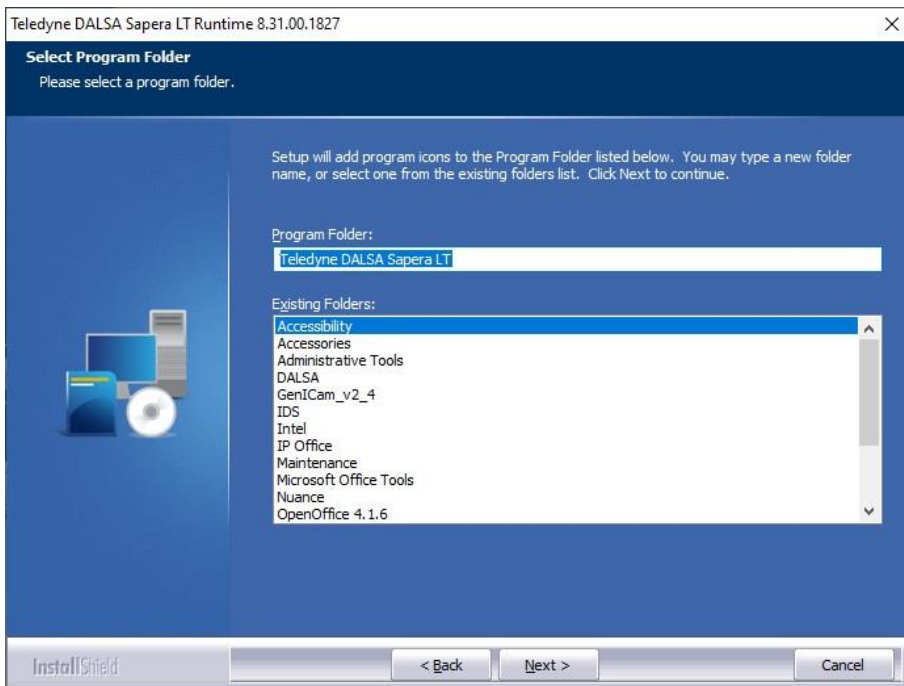
Click **Yes** to its license agreement.



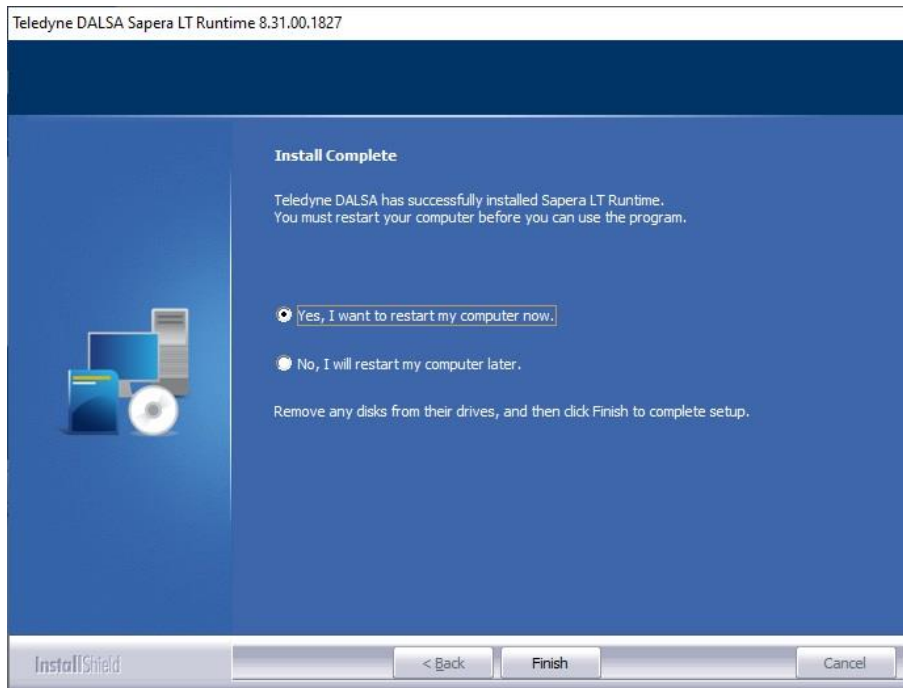
Select **Teledyne Dalsa frame grabbers and CameraLink cameras** and click **Next**.



Click **Next**.



Click **Next**.



Click **Finish**, allowing the PC to restart.

Now the 8800-Series 4.0.1 software release should initialize and operate.